

Visual Evidence Record

Supplementary to Assessment Report

BUILDING SCANNED

Sample Building

LOCATION

Sample Building Address

TEST DATE

May 05, 2025 2:00 PM

ON SITE ENGINEERS

Engineer A, Engineer B

HEADLINE FINDINGS

57

ROOF CONDITION INDEX

Good

VISUAL CONDITION

2 yrs

REMAINING ROOF LIFE

MRR Recommendation: Moderate Repair Needed

2 years remaining service life



Contents

1	How to Use This Document	1
1.1	Location Maps and Photographs	1
1.2	Severity Key	1
2	Visual Anomaly Record	2

How to Use This Document

1.1 Location Maps and Photographs

For each roof section and defect type, a location map shows approximate anomaly positions as dots on the section aerial image. Annotated photographs for that defect type follow each map.

1.2 Severity Key

High High severity **Medium** Medium severity **Low** Low severity

Condition indices, repair costs, and recommendations are in the **Roof Condition Assessment Report**.

Visual Anomaly Record

For each roof section and defect type, a location map shows approximate anomaly positions as dots, followed by annotated photographs for that defect type.

Debris And Vegetation

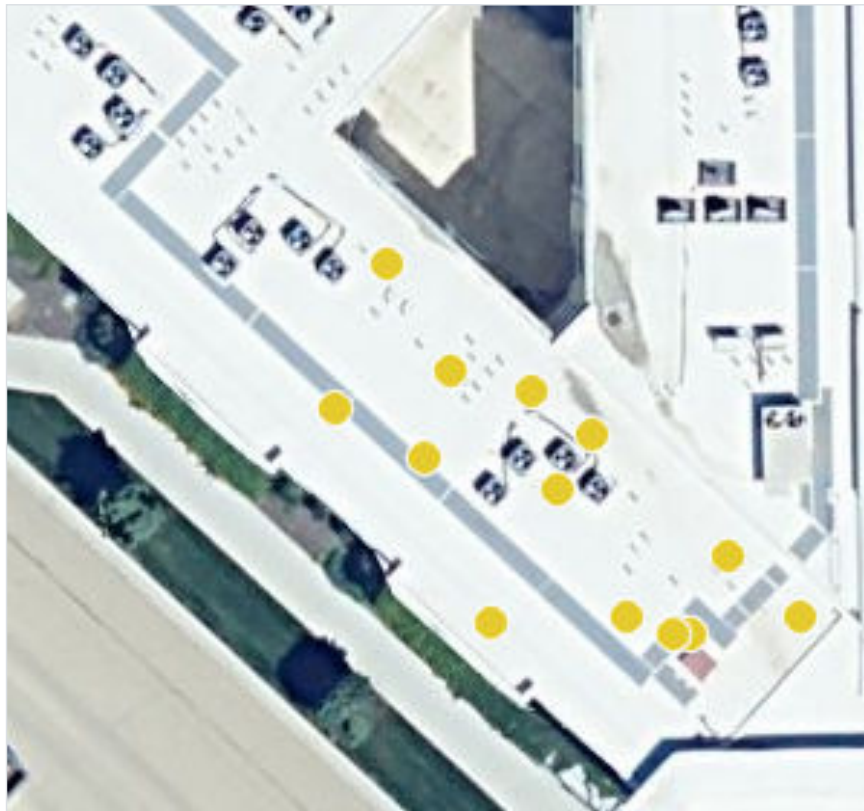


Figure 2.1. Debris And Vegetation locations

Visual Evidence Record



a Debris And Vegetation (High)



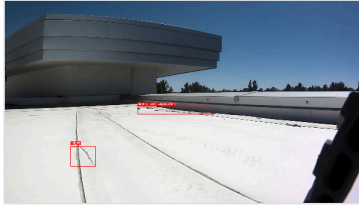
b Debris And Vegetation (High)



c Debris And Vegetation (High)



d Debris And Vegetation (Medium)



e Debris And Vegetation (Medium)



f Debris And Vegetation (Medium)



a Debris And Vegetation (Medium)



b Debris And Vegetation (Low)



c Debris And Vegetation (Low)



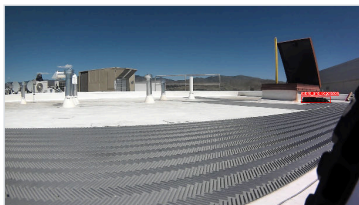
d Debris And Vegetation (Low)



e Debris And Vegetation (Low)



f Debris And Vegetation (Low)



a Debris And Vegetation (Low)

Defective Seams



Figure 2.5. Defective Seams locations



a Defective Seams (High)



b Defective Seams (Medium)



c Defective Seams (Low)

Flashed Penetrations

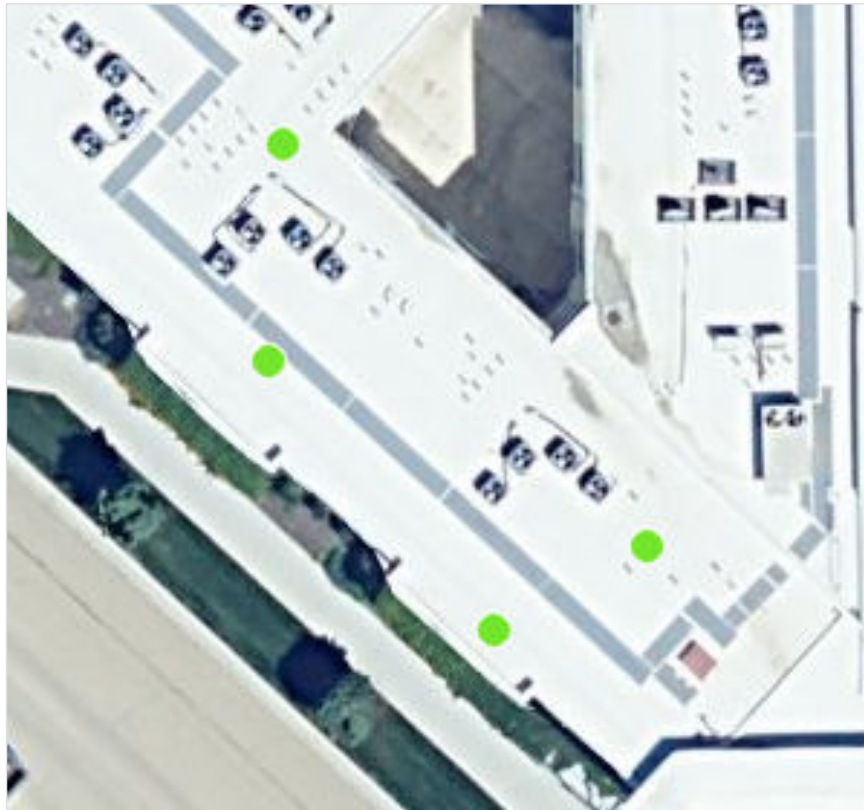


Figure 2.9. Flashed Penetrations locations



a Flashed Penetrations (Medium)



b Flashed Penetrations (Medium)



c Flashed Penetrations (Low)



d Flashed Penetrations (Low)

Improper Equipment Supports

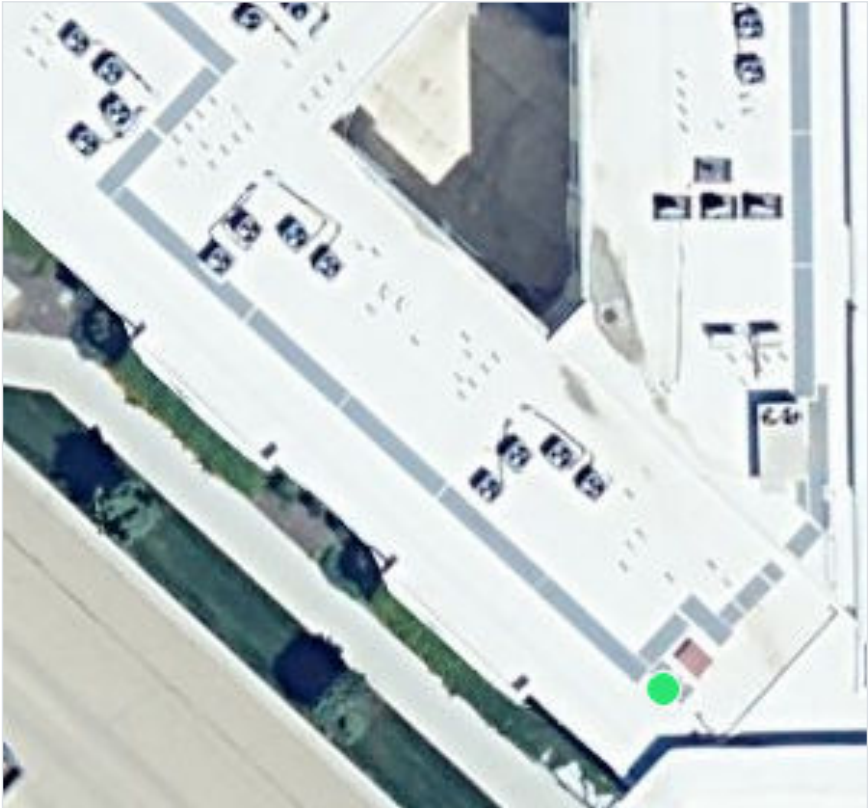


Figure 2.11. Improper Equipment Supports locations



a Improper Equipment Supports (Medium)

Patching



Figure 2.13. Patching locations



a Patching (Medium)



b Patching (Medium)



c Patching (Low)



d Patching (Low)



e Patching (Low)

Ridges

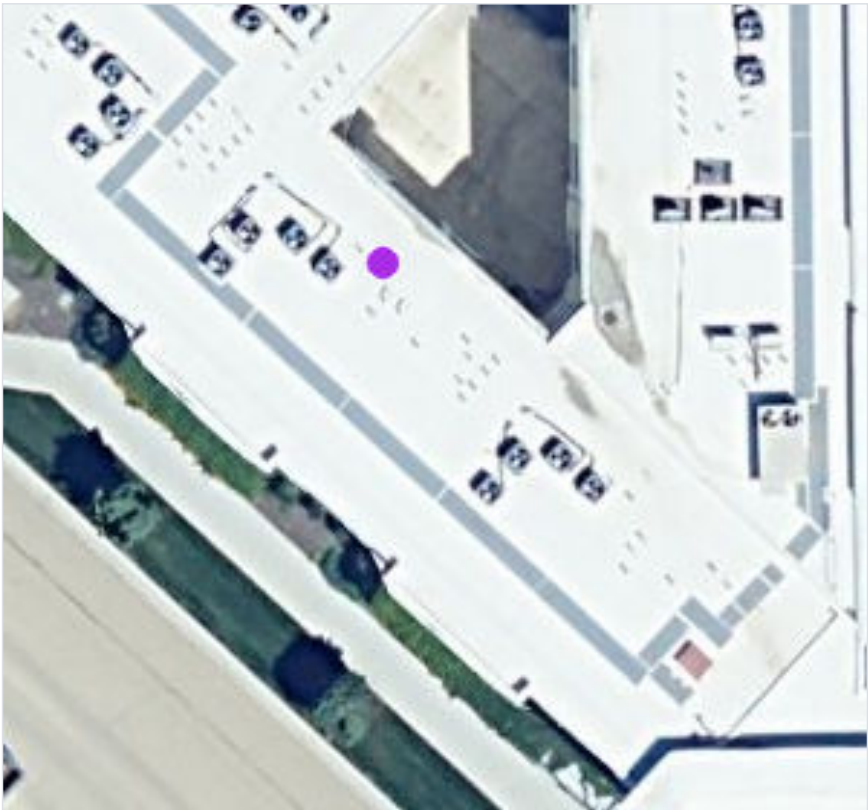


Figure 2.15. Ridges locations



a Ridges (Medium)

Holes Cuts And Abrasions

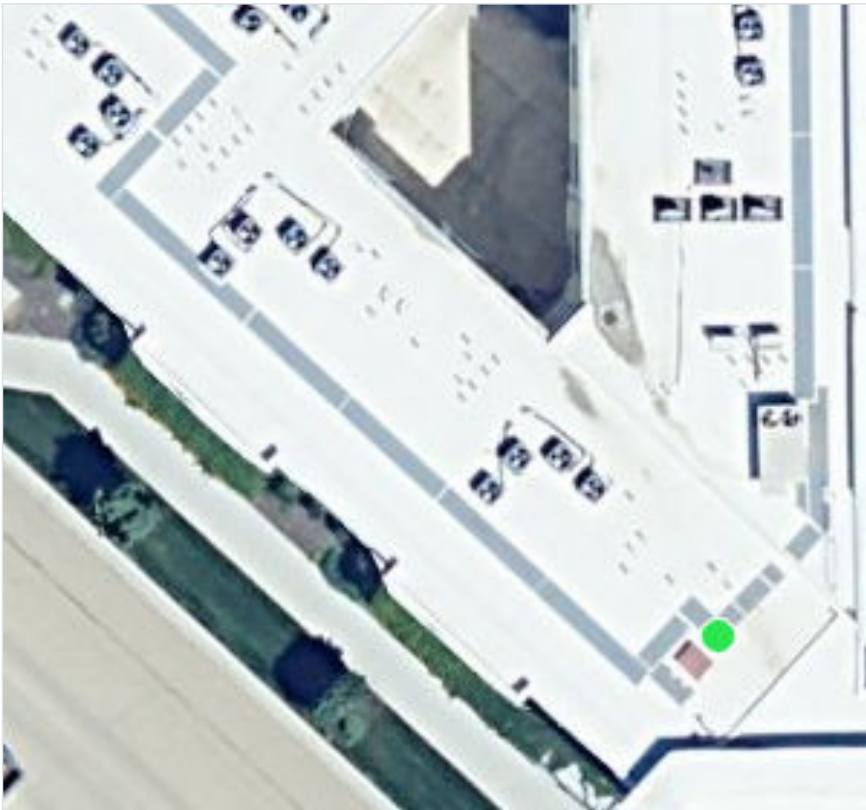


Figure 2.17. Holes Cuts And Abrasions locations



a Holes Cuts And Abrasions (Low)

Ponding

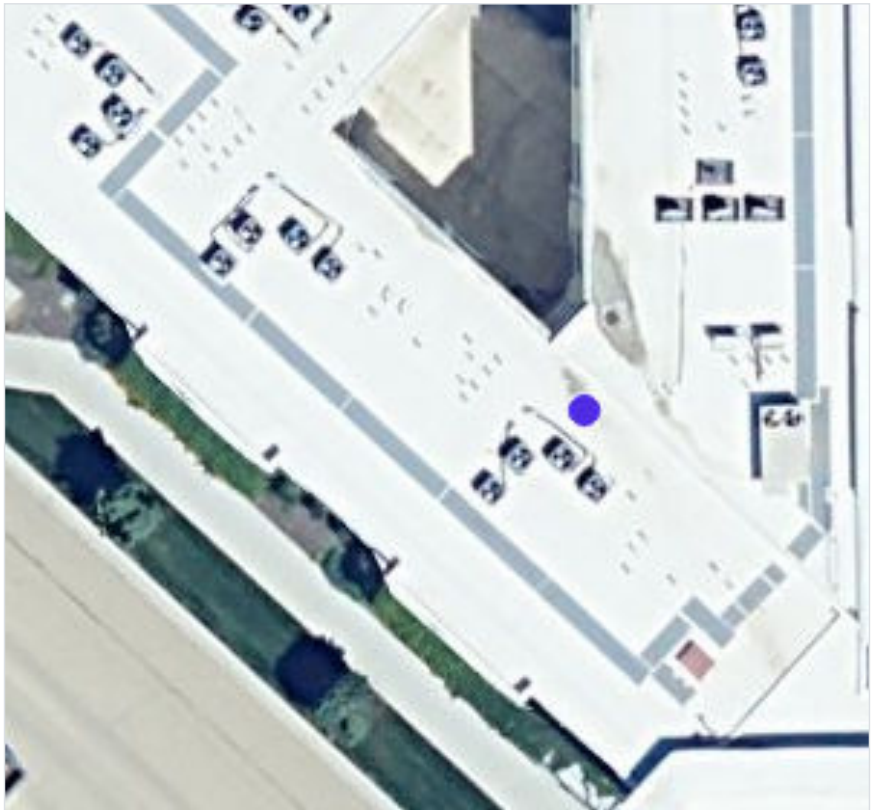


Figure 2.19. Ponding locations



a Ponding (Low)

Surface Coating Deterioration

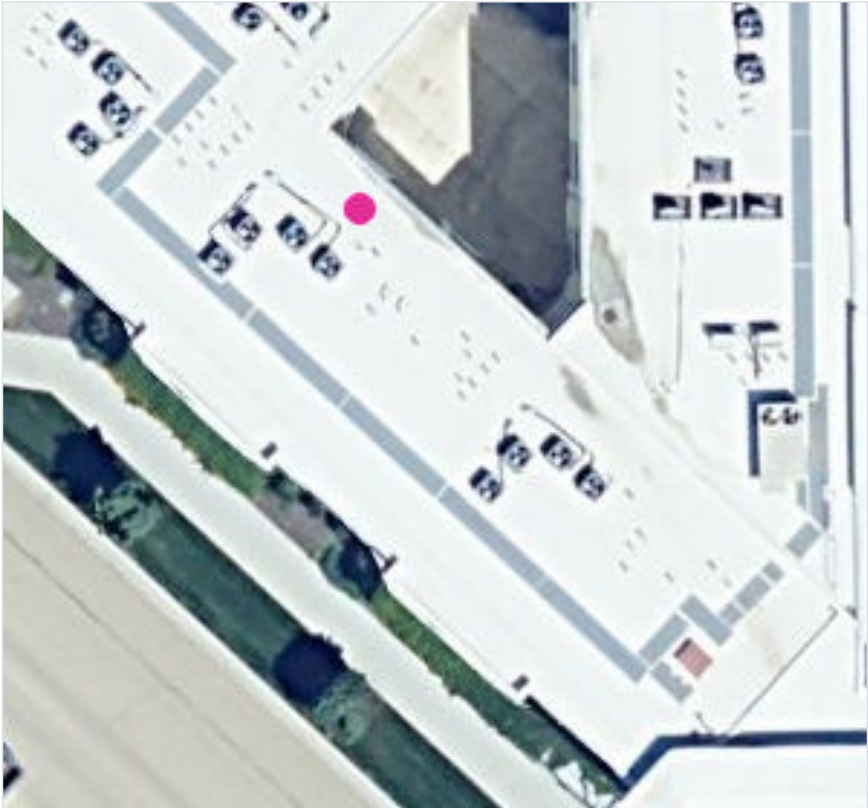


Figure 2.21. Surface Coating Deterioration locations



a Surface Coating Deterioration (Low)